

# TRIPOD TURNSTILE

## BASTION-M TWIN

Bastion-M Twin is one leg base tripod turnstile gate. Enlarged housing allows getting extra strength and robust benefits which are enough to keep pedestrian traffics of high intensity.



### ROBUST TRIPOD TURNSTILE WITH STYLISH DESIGN

 **120**  
pers/min  
FREE ACCESS

 **50**  
pers/min  
CROSSING CAPACITY

 **600**  
mm  
PASSAGE WIDTH  
(one side)

 **41-54** \*  
PROTECTIVE LEVEL

 **DROP-ARM**

 **MOTORIZED**

 **BI-DIRECTIONAL**

#### Advantages

- Bi-directional servodrive tripod turnstile with panic / bar drop-arm function
- High quality at a cost effective price
- Integration with any type of access control and ID systems
- Low power consumption
- Panic / bar drop-arm function with automatic reset
- Whisper quiet, low noise operation
- Optional indoor or outdoor housing types
- Wide range of accessories
- Availability of a backup battery connection
- Complete supply set as a standard

#### Standard

- 8 LED indicators
- Wired remote control
- Supply of backup battery power connection
- Anti-panic function with automatic reset

#### Options

- Preparation for various third-party devices (e.g. passage counter, RFID/Proximity/BioMetric readers, coin acceptor, push button, barcode and QR-code reader)
- Heating function for external installation (for cold climates)
- Cooling system

\* first figure is for internal installation, second figure is for outdoor installation (up on request).



www.tiso.global  
+380 (44) 291-21-11  
e-mail: sales@tiso.global



### Technical Specifications:

Unit width, mm	1530
Unit length, mm	793
Unit height, mm	1000
Mechanism	Servo-driven (Triservo-M)

#### Controlled by:



access control system;



push button control unit

#### Electrical Specifications:

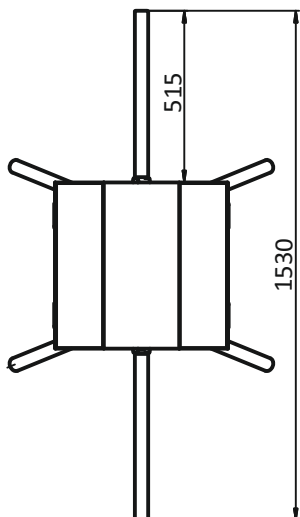
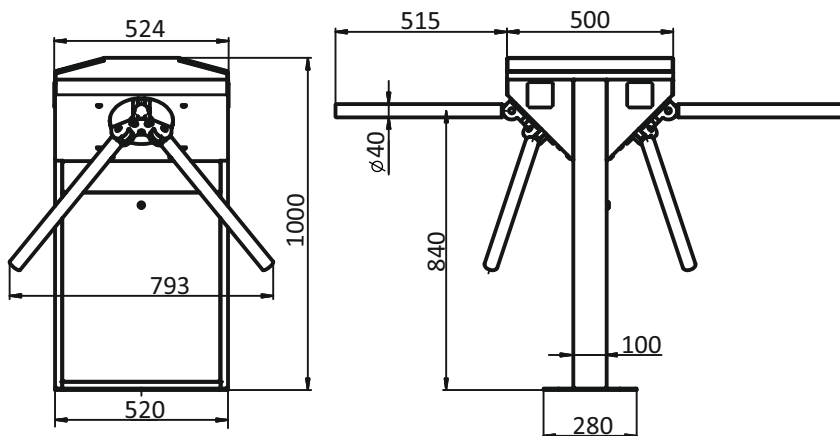
- Voltage:
  - from the AC (100-240)V, 50/60Hz;
  - from a DC source 12 V;
- Maximum power consumption 55W per pass;

#### Ambient temperature range:

- Standard: from +1°C to +40°C, up to IP41
- Optional: from -20°C to +55°C, up to IP54

#### Materials:

Standard housing	Brushed SS AISI 304
Available housing	Brushed SS AISI 316 Polished SS AISI 304 Polished SS AISI 316 Powder coated RAL
Tripod hub	Cast aluminum with grey painted finishing



#### Installation areas:

- Governmental Institutions
- Military Bases
- Nuclear Power Plants
- Production sites (Industrial Plants)
- Commercial areas
- Financial institutions
- Airport Premises
- Business (Office) Centers
- Hotels
- Sport Complexes
- Recreation areas
- Urban areas
- Education Institutions and others

