

SWING GATES

GATE-TTS

Gate-TTS is automatic gate opener with a metal U-shape flag. The main difference determined by telescopic desing of the wing. Therefore the width of passage can be adjusted.



UNIQUE TELESCOPIC ADJUSTABLE FLAG

ALLOWS TO FIT THE GATE TO ANY PASSAGE

 **700-1050**
mm
PASSAGE WIDTH

 **IP 41-65***
PROTECTIVE LEVEL


PASSAGE FOR DISABLED


MOTORIZED


BI-DIRECTIONAL

Advantages

- Solution for disabled and trolley access
- Appropriate addition to other TiSO turnstiles (waist-height and full-height)
- Steadfast housing suitable for high traffic areas
- Can be integrated with any type of access control systems
- Low power consumption
- Left hand, right hand and double-sided opening are available
- Low noise system operation
- Gate housing could be adapted for both indoor and outdoor installations
- Can be mounted on a mobile platform (TiSO Frame-M)
- Fail safe

Standard

- Wired remote control panel

Options

- Connection to additional external stand with integrated passes counter/RFID device/coin acceptor push button/fingerprint/barcode/QR-code reader etc.)
- Radio controller
- Heating function for external installation
- Automatic opening when power goes off
- Passage width may vary upon client's request

* first figure is standard, all other available upon request.



www.tiso.global
+380 (44) 291-21-11
e-mail: sales@tiso.global



Technical Specifications:

Passage width, mm	700 - 1050
Unit width, mm	865 - 1215
Unit diameter, mm	225
Unit height (with glass), mm	1000
Unit weight, kg (not more)	42
Mechanism	Motorized

Controlled by:



access control system;



manual control

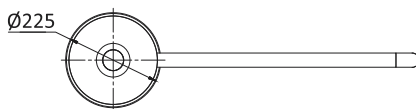
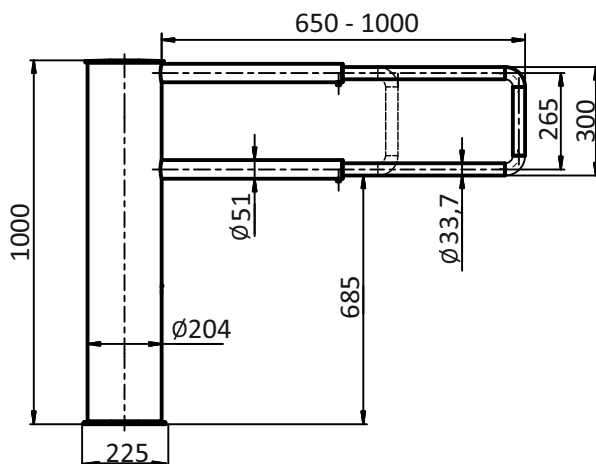
When power goes OFF both directions are free.

Electrical Specifications:

- Voltage:
 - from the AC (100-240)V, 50/60Hz;
 - from a DC source 12 V;
- Maximum power consumption 55W per pass;

Materials

Standard housing	Brushed SS AISI 304
Available housing	Brushed SS AISI 316 Polished SS AISI 304 Polished SS AISI 316 Powder coated RAL



Installation areas:

- Governmental Institutions
- Military Bases
- Nuclear Power Plants
- Production sites (Industrial Plants)
- Commercial areas
- Financial institutions
- Airport Premises
- Business (Office) Centers
- Hotels
- Sport Complexes
- Recreation areas
- Urban areas
- Education Institutions
- others